



PROGRESSIVE CAVITY PUMPS

..... Since 1975

"heart of your process"



Technical Features

Capacity : 5 to 100 m³/hr

Pressure : Up to 12 Bar

- Magma & Massecurite (All Grades)
- Other Highly Viscous Applications



Technical Features

Capacity : 5 to 300 m³/hr

Pressure : Up to 24 Bar

- Sludge Transfer
- Slop transfer pump
- Molasses (All Grades)
- Sulphited Syrup



Technical Features

Capacity : 01 to 05 m³/hr

Pressure : Up to 48 Bar

- Flocculant
- Milk of lime
- Phosphoric Acid
- Other dosing applications

Some Successfully Installations



Molasses Transfer-India



Spent Wash Transfer-Kenya



Special Application-Vietnam



Pontoon Mounted Sludge Transfer -Malaysia



ETP- Sludge Transfer-UAE



Long Distance Molasses-India

SYNO PUMPS (I) PVT. LIMITED

Head Office & Unit - 1 : K-11, Site No. 3, Panki Industrial Area, Kanpur-208022 (INDIA)

Office. : + 91 89480 05005, Direct: +91 92355 94660, 98383 92839

E-mail : info@synopumps.com., Website : www.synopumps.com



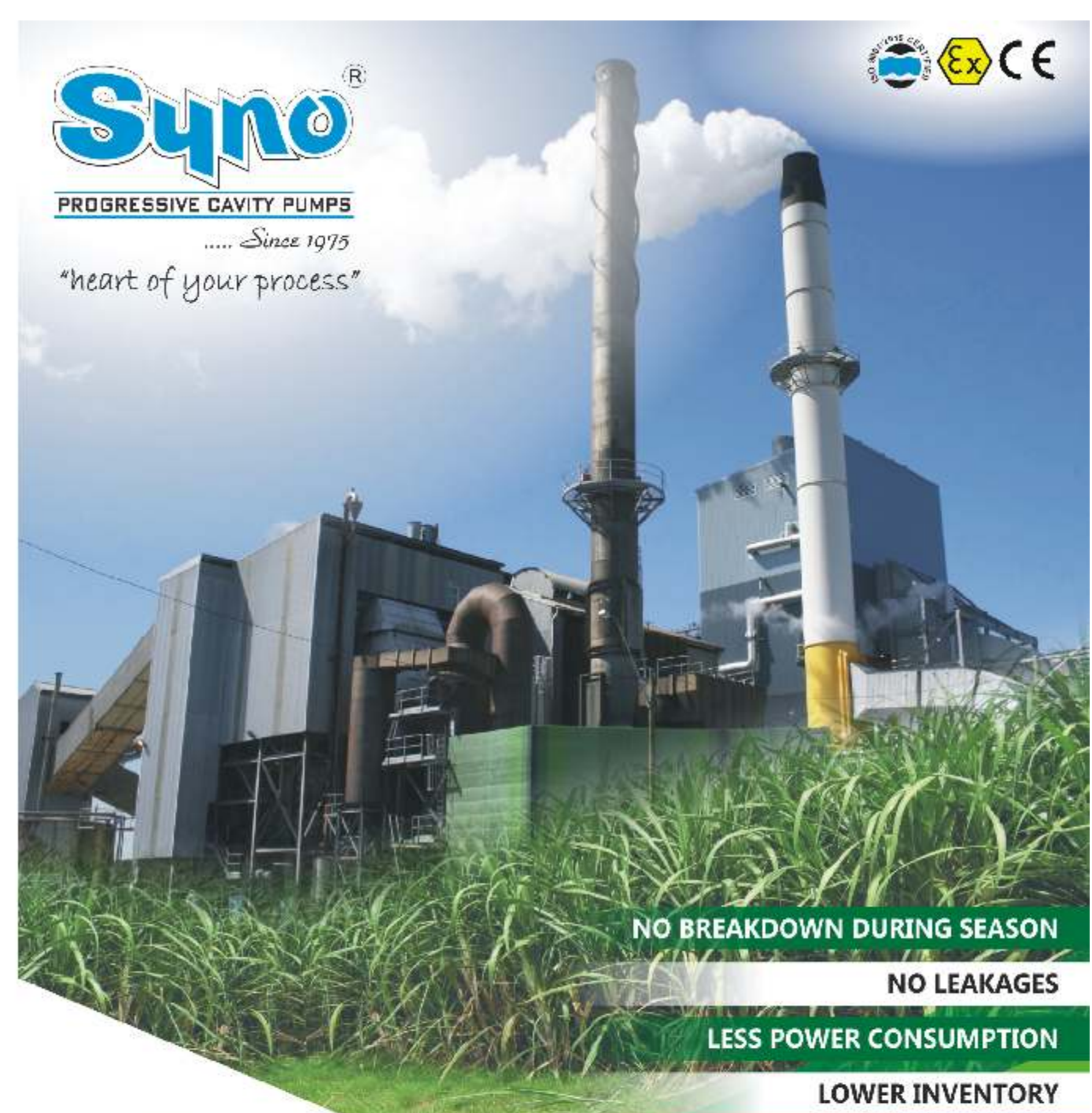
WORLDWIDE PRESENCE



PROGRESSIVE CAVITY PUMPS

..... Since 1975

"heart of your process"



NO BREAKDOWN DURING SEASON

NO LEAKAGES

LESS POWER CONSUMPTION

LOWER INVENTORY

COMPLETE SERVICE SUPPORT

& much more.....



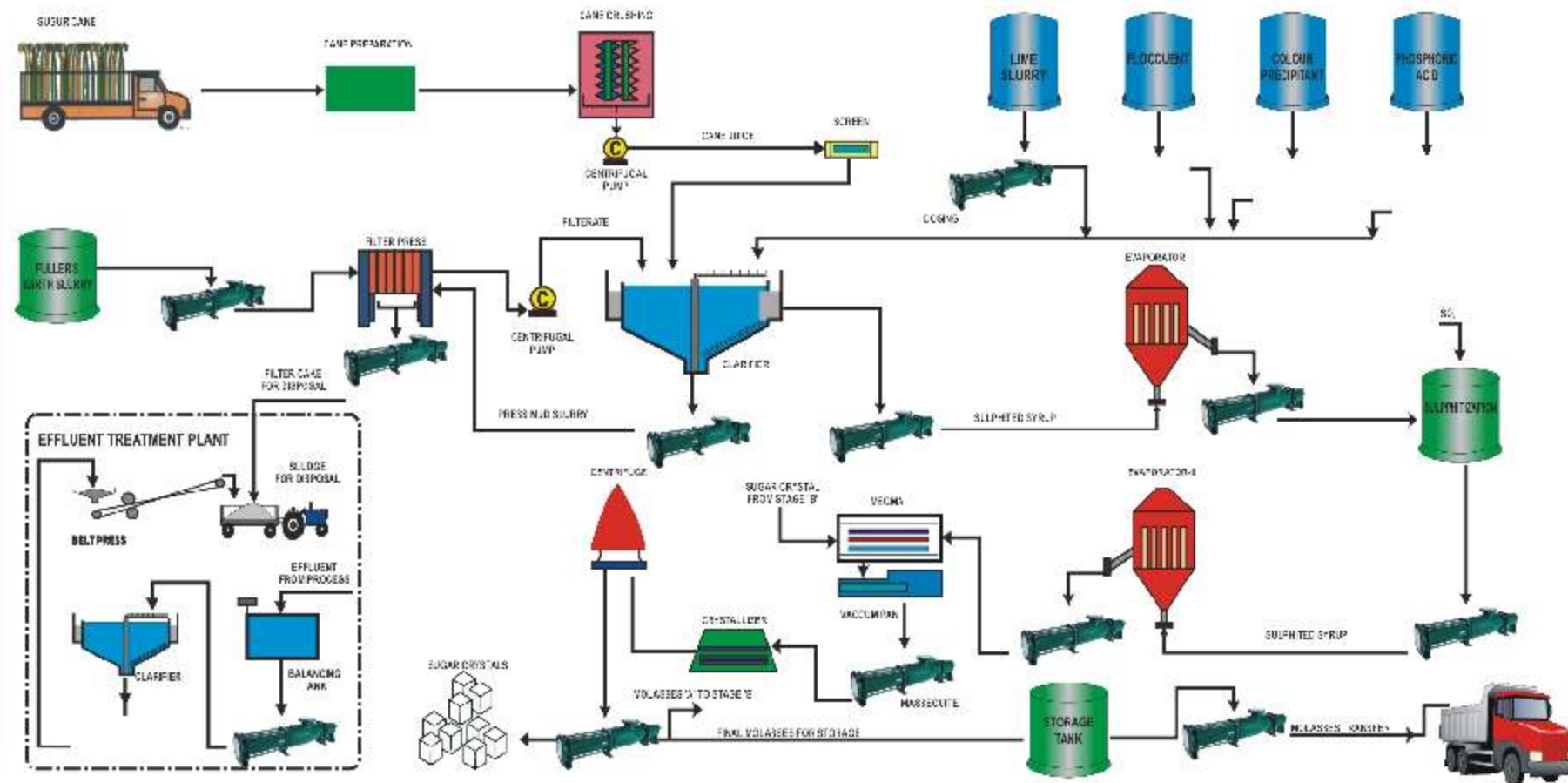
SYNO PUMPS IN SUGAR INDUSTRY

Syno Pumps has expertise of over 50 years in providing fluid handling solution to a Sugar Distillery & Refineries. In sugar industry these pumps are used to handle liquids at various stage including Dosing of Chemicals. Transfer of Syrup, Magma, Massescuite and all Grades of Molasses. Some of the few design features include:

- ➔ Good Negative Suction Capability
- ➔ Less Motor Power Requirement
- ➔ Can Handle High Brix on High Viscosity
- ➔ Positive Displacement - Flow Independent of Head .

APPLICATIONS

- ➔ Phosphoric Acid
- ➔ Spent Wash Transfer
- ➔ Sludge Transfer
- ➔ Slop transfer pump
- ➔ Molasses (All Grades)
- ➔ Flocclents Dosing
- ➔ Magma & Massecuite (All Grades)
- ➔ Other Highly Viscous Applications
- ➔ Effluent treatments
- ➔ Juice & Melt
- ➔ Sulphited Syrup
- ➔ Colour Precipitant

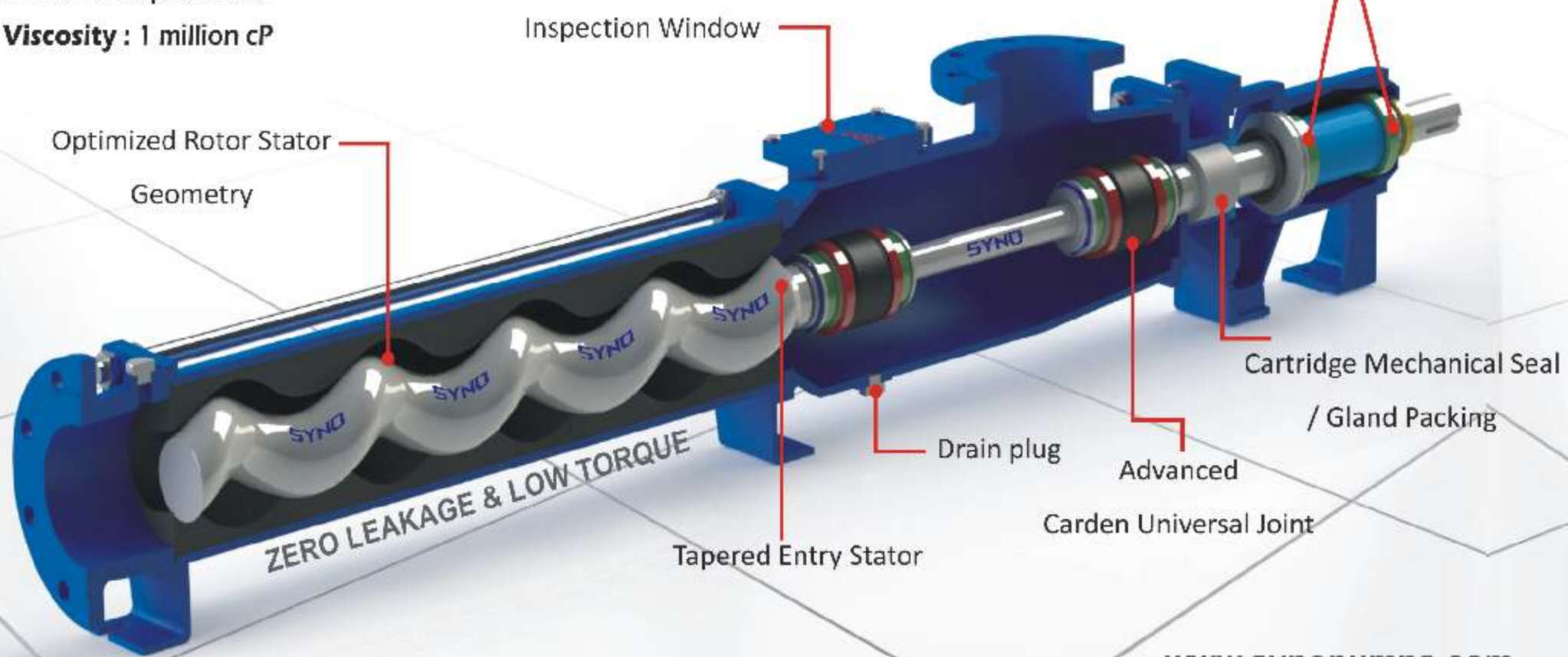


First Choice of OEM's >>>

Technical Features

- Capacity :** Up to 400 m³/hr
- Pressure :** Up to 48 Bar
- Viscosity :** 1 million cP

Your Design Advantage with Syno Ultra Performance Pumps



Carden Universal Joint



Carden Universal Joint



Pin-Bush Universal Joint

www.synopumps.com

APPLICATIONS	PROPERTIES	SYNO	ROTA	GEAR	WHY SYNO PC PUMP
MOLASSES	Highly Viscous	✓	✓	✓	Lower Power Consumption, Single Gland
MAGMA	Highly Viscous & Contains crystals	✓	✓	✗	Lower Power Consumption, Lesser Down Time Can Handle Crystals
MESSECUITE	Highly Viscous & Contains High % of Crestals	✓	✗	✗	Lower Power Consumption, Lesser Down Time Can Handle Crystals
	Low Viscosity Conatin Crystals	✓	✗	✓	Lower Power Consumption, Single Gland
MELT SULPHITED SYRUP	Low Viscosity, Shear Sensitive & Entrapped Gas	✓	✗	✗	Gentle Handling, Enables Pumping Shear Sensitive Liquids, Hence No Frothing
MELT FLOCCULENT DOSING	Low to Moderate Viscosities	✓	✗	✗	Metered Flow Possible by Coupling The Pump through A speed Variator
PHOSPHERIC ACID	Low to Moderate Viscosities	✓	✗	✗	Metered Flow Possible by Coupling The Pump through A speed Variator
MILK OF LIME	Low to Moderate Viscosities and Contain Solids	✓	✗	✗	Metered Flow Possible by Coupling The Pump through A speed Variator
ETP SLUDGE	ETP Sludge	✓	✗	✗	Lower Power Consumption, Capable to Handle Varying Solids